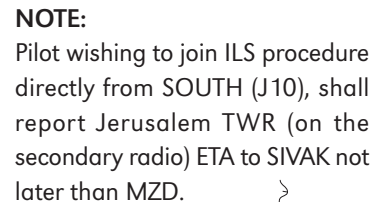


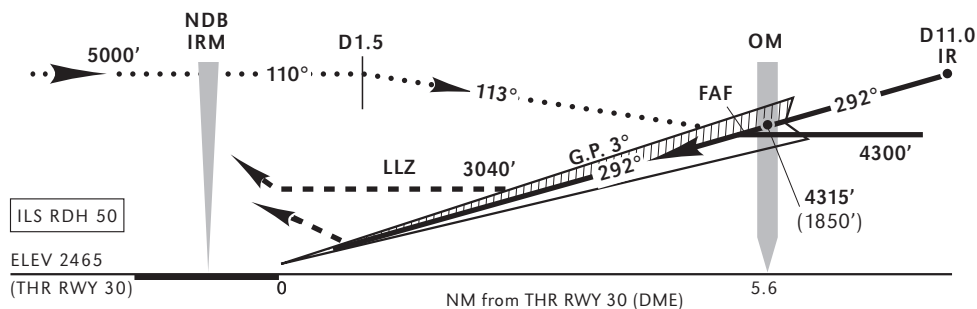
**AERODROME ELEV 2485 FT  
HEIGHTS RELATED TO  
THR RWY 30-ELEV 2465 FT**

TMA	119.50
TWR	118.80
	122.85

**JERUSALEM  
ILS DME / ILS  
RWY 30**

Transition Altitude NIL

Climb straight ahead to **4000'**, turn **LEFT** to **IRM NDB** climbing to **5000'** and hold.



Straight-in Approach								1	Circling		
ILS DA(H) 2820' (355')				LLZ (GP INOP) MDA(H) 3040' (575')				MAX KTS	North of RWY 12-30 prohibited		
A	1600m			2100m			90		MDA (H)	VIS	
B							120	3180' (695')	2100m		
C				2400m			140	3200' (715')	2100m		
D	2000m						2800m			165	3260' (775')
Ground speed - KTS		60	80	100	120	140	160	180	1 LLZ WO DME - NOT AUTHORIZED		
Rate of descent - FPM		323	430	538	646	753	861	968			
LLZ: MAPT at THR (ZERO DME)											

**1** LLZ WO DME - NOT AUTHORIZED